

NEW 2020

# ROYAL LINE

## B&C QUEEN Crew Neck - 083



COLLECTION

The luxurious Crew Neck for women thanks to exceptional softness, modern style and supreme printability offering 20 awesome colours and a wide range of sizes.

The premium Crew Neck for women at its best.

20 COLOURS

VISIBLY MORE PRINTABLE  
ROYAL  
PST  
OUTER 100% COTTON



### SWEATSHIRT - BRUSHED

80% Pre-Shrunk Ring-Spun Combed Cotton - 20% Polyester

280 g/m<sup>2</sup> | XS - S - M - L - XL - 2XL - 3XL\*

5 pcs/pack & 30 pcs/carton

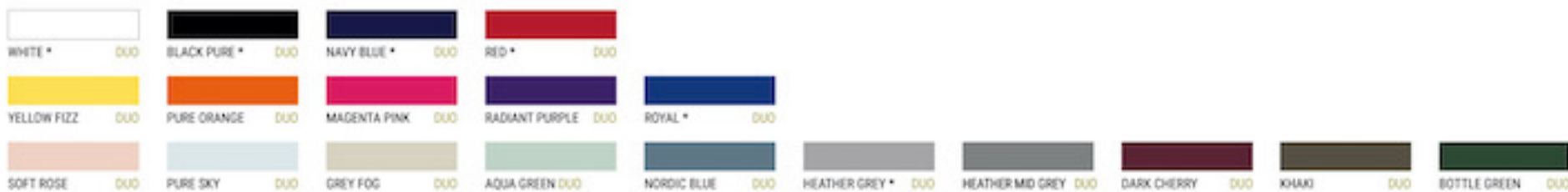
\* Only available in Black Pure, Navy Blue, Heather Grey, Asphalt, Royal, Red, White

Want the same style but in men?  
Try the B&C KING Crew Neck



DUO♂  
CONCEPT

SWEATSHIRTS | WOMEN



HEATHER GREY: 75% PRE-SHRUNK RING-SPUN COMBED COTTON - 25% POLYESTER - 4% VISCOSE / HEATHER MID GREY: 60% PRE-SHRUNK RING-SPUN COMBED COTTON - 40% POLYESTER

### Style

- Elegant, luxurious & comfortable Crew Neck sweatshirt
- Side seamed style ensures the best fit and a feminine silhouette
- Identical colours (20) for men and women for a perfect duo
- 7 sizes - XS to 3XL
- Qualitative long-lasting necktape
- Single Jersey halfmoon in the back for premium look and extra durability

### Quality / Handfeel

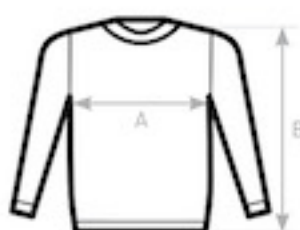
- Made of 80% ring-spun combed cotton / 20% Polyester
- STANDARD100 by OEKO-TEX® certification for the best comfort of your skin
- Ultrasoft peached feel 100% cotton-faced fabric with ultimate printing surface
- Brushed inside for a perfect warm and cosy premium feel
- Truly durable and ultra-comfortable thanks to B&C PST technology and its polyester filament

### Printability / Decoration

- Ultimate printing surface thanks to its ultrasoft 100% combed cotton-faced fabric (B&C PST technology)
- Very smooth, soft and even surface for perfect printing results
- Tested and approved for all printing techniques applicable on cotton
- Folded in box to ease the decoration process

### Labels

- Retail like labeling
- Ultrasoft double satin label
- Qualitative Gold and Black print design
- Straightforward size identification
- Labels are following the mandatory EU regulation



B&C QUEEN CREW NECK WW010	XS	S	M	L	XL	2XL	3XL	4XL
A HALF CHEST	44,5	47	50	53	56	59,5	63	-
B BODY LENGTH	60	62	64	66	67	68	69	-

